

Apollo Mechanical & Touchplan

From Start to End, Digitally

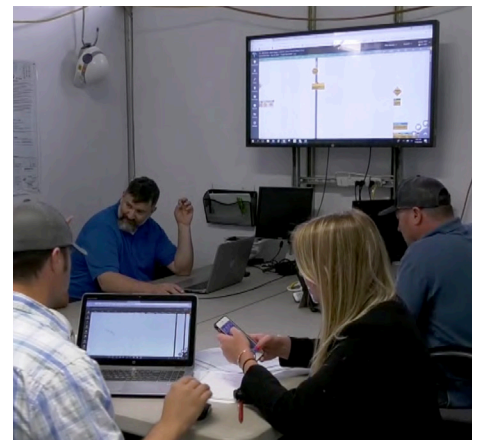


The Client

"Building People Who Build Great Things." Apollo Mechanical Contractors, based out of Kennewick, Washington, has been a leading mechanical contractor since 1981. Apollo's founder and CEO, Bruce Ratchford, took what he knew about sheet metal, mechanical design, and business management, and has been putting it to work with his team for the last 40 years.

What Drove Apollo to Touchplan

Apollo had an internal desire to improve their construction planning ability. Construction is a high variable and high volume type industry, which makes it difficult to bring learnings from one project to another. There is a lot of human glue which holds the process together and they were looking to improve the ability to disseminate and manage information throughout their processes. The dynamic nature of most construction projects make them an overhead nightmare to keep up with planning and execution. "A lot of hours had been wasted in simply manipulating the plan data, and eventually the plan data gets so out of date you simply end up in a reactionary state," said Eldon Parry, Senior Project Manager at Apollo Mechanical Contractors. They were also looking for a better method of managing the plan data, in order to focus more on execution rather than data manipulation.



[above] Project Teams Reviewing Progress at a Daily Huddle

[top] Portland State University | Renovation of 1960's Building's Mechanical Systems | Portland, OR



“
The more you're able to keep up with the plan and maintain it, keep guys current on what the changes are, the more success and the better chance you have”

Eldon Parry, Senior Project Manager

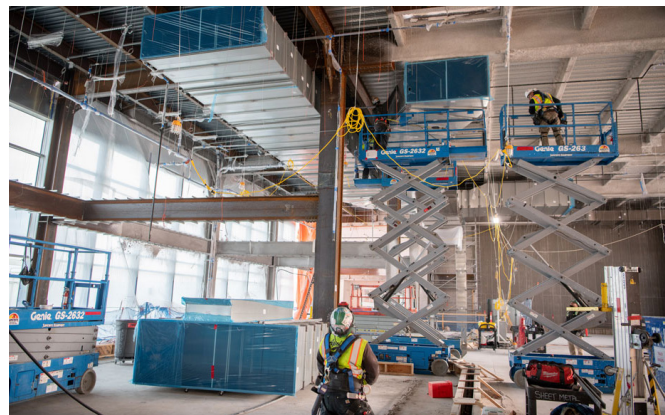
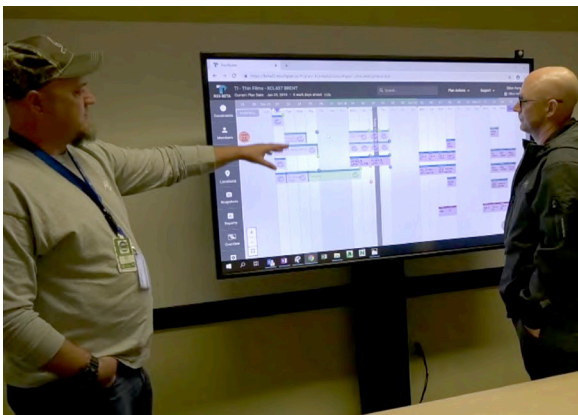
“

A huge benefit of Touchplan is the ability for tradesmen to quickly learn how to use it. Field crews for us immediately start owning their plan information and helping populate content. This is an invaluable progression and naturally leads to, at minimum, a more cohesive team.”

Eldon Parry, Senior Project Manager

Solution

In 2016, Apollo brought on Touchplan for the first time and since has adopted it across all projects. Touchplan is a fully collaborative tool that allows project teams to update their plans on a live basis, no matter where they are on the job site or off-site. With the desire to better manage the data in their plans, Touchplan was a smart and efficient option for Apollo. With Touchplan, you can give everyone involved in the project an easy to use digital interface that not only allows tasks to be updated on a live basis anywhere in the field, but creates a comprehensible format of what really needs to happen within the master schedule in order to finish the job on time.



[From left] Project Leaders Reviewing Job Tickets in Touchplan and Denver International Airport | Addition of Four Wide Body Gates to Concourse B | Denver, CO

RESULTS

Our relationship with Apollo Mechanical has produced some mutually beneficial results, including:

- Ability to see the duration of a project from the start to end date.
- Now can manage multiple areas of a project from one digital interface and see where people are in the field on a live basis.
- Substantial time saved updating the plan throughout the project.
- Teams can diagnose problems on a live basis and attack them early with efficient solutions